



## RDBA

Roaming Database Audit

The commercial roaming and technical IREG teams are receiving a significant amount of IR.21/IR.85 updates on daily basis with different formats (xml, pdf or word). They need to detect the changes in the new document, inform the involved department (support or troubleshooting) for implementation on network side and follow-up on the completion of this configuration.

Quite often, this configuration can be implemented only partially or completely forgotten due to human error or more urgent projects and troubleshooting activities. The result of this omission is a restricted/denied service accessibility for inbound and outbound roamers, which leads to a poor quality perception and a major loss of revenues. By the time operator gets complaints and investigates the problem, the revenue and image impact can be quite significant.

RoamSmart's **Roaming Database Audit (RDBA)** is an automated web application which helps identify the potential misconfiguration cases in a pro-active approach and fix them leading to an improved quality of service and additional roaming revenues.

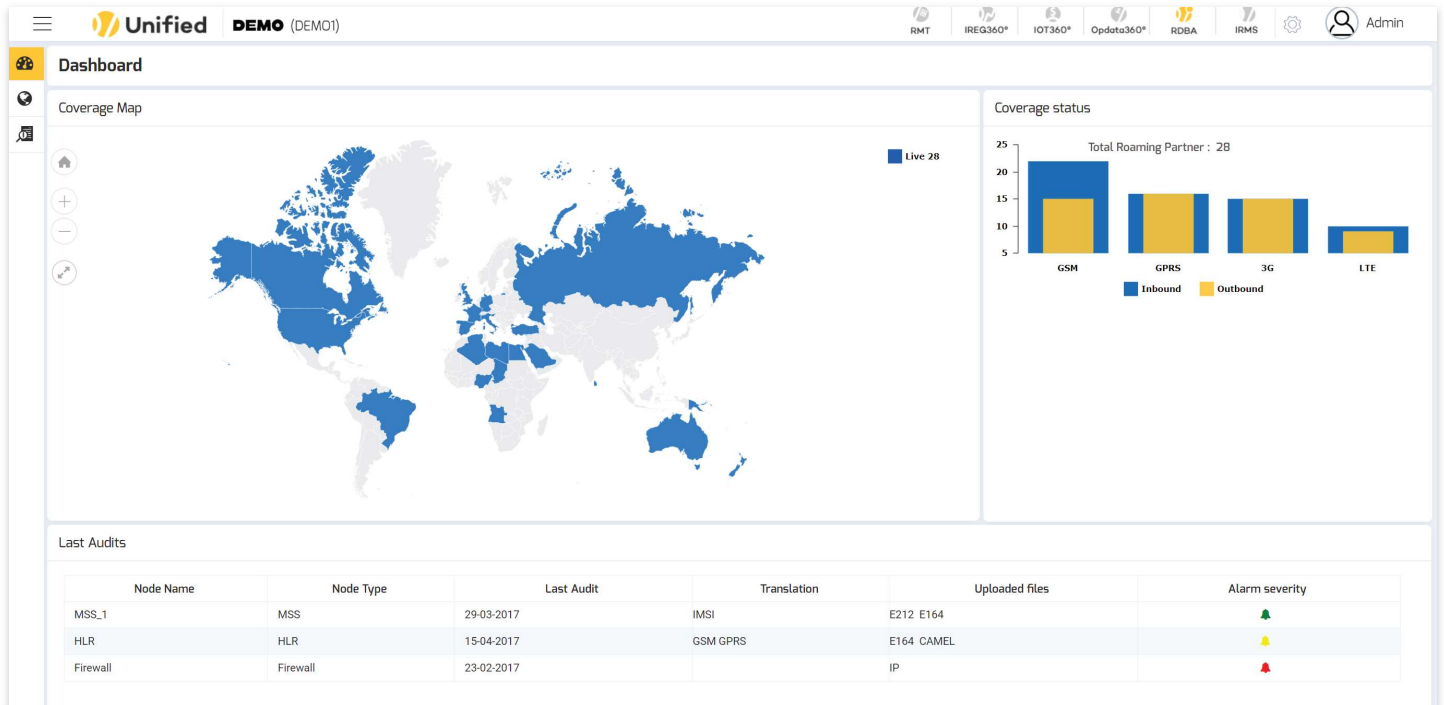
### RDBA main features:

- ⑦ Dashboard for easy follow-up on coverage status and latest audits.
- ⑦ Automatic upload of IR.21/IR.85 updates from GSMA Infocenter Inbox.
- ⑦ Version Control and Parsing of RAEX compliant IR.21/IR.85.
- ⑦ Manual conversion of non-RAEX documents (in pdf, word or excel format) to be done by RoamSmart. Managed solutions team and full content to be available within 48 hours from document availability. RDBA makes all your partners RAEX compliant and creates xml IR.21 for those who send other formats.
- ⑦ Build and maintain an updated reference Database.
- ⑦ Upload of Core Node Database tables.
- ⑦ Automatic Audit and detection of configuration gaps.
- ⑦ Comprehensive reporting and alarming for better visibility.

RDBA is built on RoamSmart's modular **Unified Roaming Platform** which offers full flexibility and adaptation to customer specific requirements for reporting and integration to external systems.

## Dashboard module

The Dashboard module provides a global overview of the main KPIs and metrics managed by the solution. This includes a map view of the coverage status, a chart on the roaming status and the list of the latest performed audits.



## Coverage module

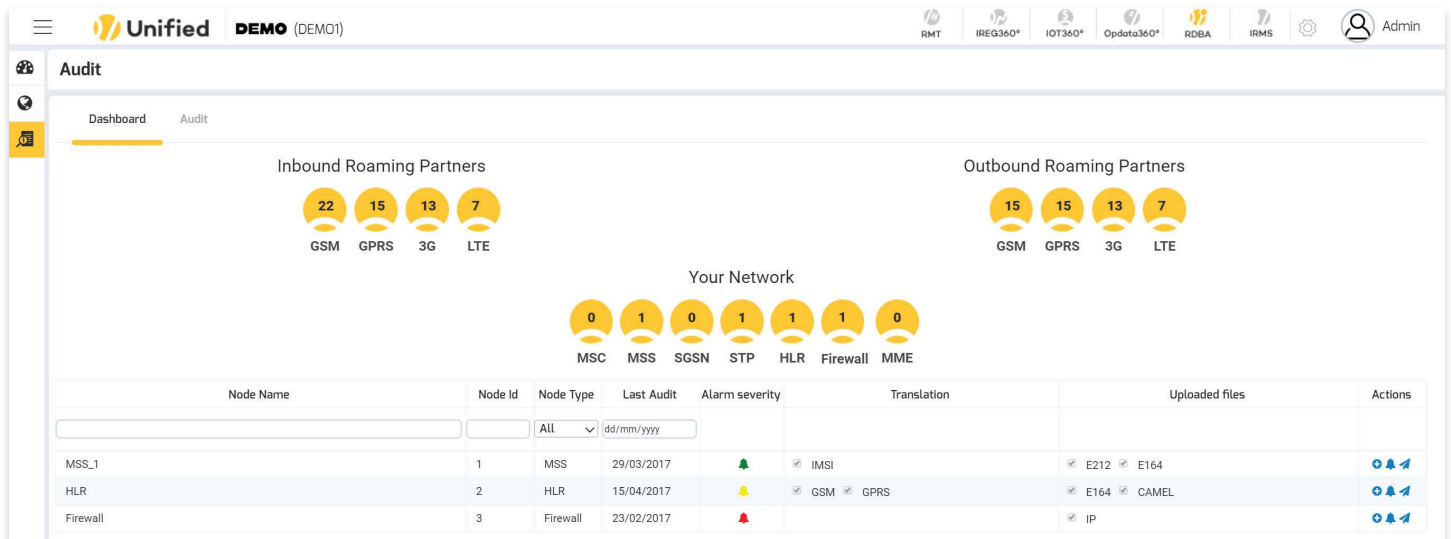
The Coverage module provides a list of roaming partners along with the launched services and launch date. Moreover, the module offers a detailed view for each roaming partner showing the main contact details, service status and available documents.

The screenshot shows the Unified Coverage module interface. It features a table with the following columns: Network, Country, Roaming Partner, TADIG, Relation, MCC/MNC, Region, GSM IN, GSM OUT, GPRS IN, GPRS OUT, 3G IN, 3G OUT, LTE IN, LTE OUT, and Actions. The table lists various roaming partners from different countries and their service status across different network types.

Network	Country	Roaming Partner	TADIG	Relation	MCC/MNC	Region	GSM IN	GSM OUT	GPRS IN	GPRS OUT	3G IN	3G OUT	LTE IN	LTE OUT	Actions
DEMO1	Russian Federation	OJSC MegaFon	AAAAA	Direct	250/02		🟢	🟢	🔴	🔴	🔴	🔴	🔴	🔴	🔍
DEMO1	Angola	Movicel - Telecomuni...	AGOMV	Direct	631/04	Africa	🟢	🟢	🟢	🟢	🟢	🟢	🔴	🔴	🔍
DEMO1	Australia	Vodafone Hutchison A...	AUSVF	Direct	505/03	Australia	🟢	🟢	🟢	🟢	🟢	🟢	🔴	🔴	🔍
DEMO1	Brazil	Claro S.A	BRACL	Direct	724/05		🟢	🟢	🟢	🟢	🟢	🟢	🟢	🟢	🔍
DEMO1	Canada	Bell Mobility Inc.	CANBM	Direct	302/610	America	🔴	🔴	🟢	🔴	🔴	🔴	🔴	🔴	🔍
DEMO1	Germany	Telekom Deutschland ...	DEUD1	Direct	262/01		🟢	🟢	🟢	🟢	🟢	🟢	🟢	🟢	🔍
DEMO1	Algeria	Orasocom Telecom Alg...	DZAOT	Direct	603/02		🟢	🟢	🟢	🟢	🟢	🟢	🟢	🔴	🔍
DEMO1	Egypt	Egyptian Company fo...	EGYAR	Direct	602/01		🟢	🟢	🟢	🟢	🟢	🟢	🟢	🟢	🔍
DEMO1	Spain	Vodafone Espana	ESPAT	Direct	214/01		🔴	🔴	🔴	🔴	🔴	🔴	🔴	🔴	🔍
DEMO1	Spain	Telefonica Moviles E...	ESPTTE	Direct	214/07		🟢	🟢	🟢	🟢	🟢	🟢	🔴	🟢	🔍

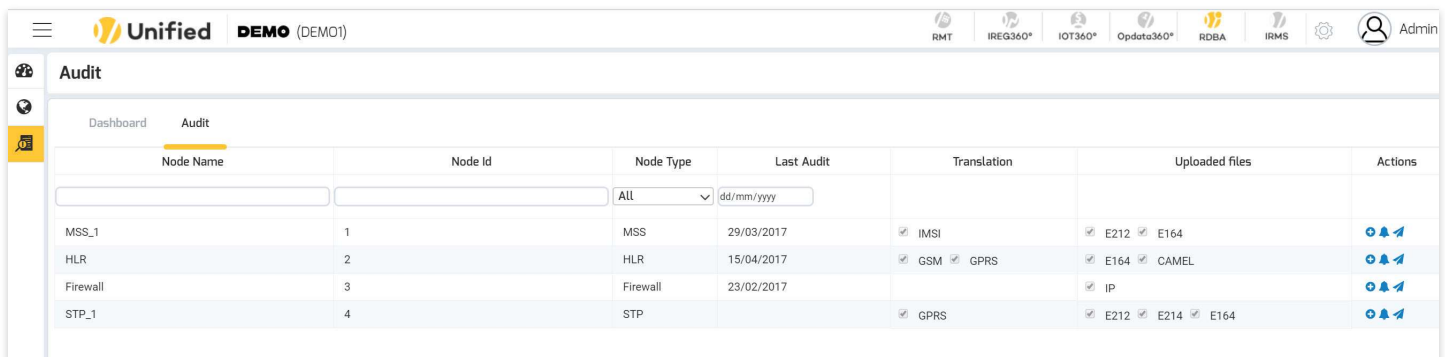
## Audit Dashboard module

The Dashboard view provides a high-level visibility on the roaming footprint, core network and gives access to the last audits and related results



## Audit module

The Audit module allows the user to select the node, upload the file(s) required for the audit and start the process to get immediate results.



## Who we are

RoamSmart is a leading provider of innovative Roaming and Big Data Solutions to mobile operators. We support Telcos in the digital transformation of their roaming and wholesale business.

Our big data based Unified Roaming Platform helps operators in managing their roaming business from different angles:

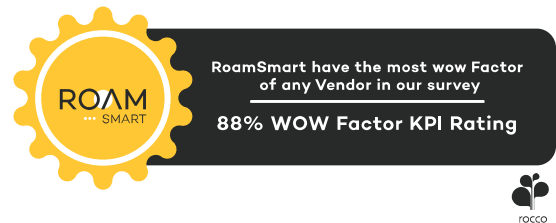
- 🔧 Operational efficiency of the rollout activity.
- 🔧 Process automation in the RAEX Management (IR.21/IR.85, IOT and Opdata).
- 🔧 Roaming revenue assurance through Core Network Database Audit.
- 🔧 Negotiation competitive edge with Inbound Roaming Market Share.
- 🔧 Business Intelligence for accurate business tracking and reporting.
- 🔧 Deep Insight on the business : Traffic, Revenues, market share and steering performance.

Our vision is to build a comprehensive and robust Big Data platform which centralizes all data from different sources and provides the flexibility to the user to manage different activities starting from Wholesale Roaming, Retail Roaming and extending to Interconnect Business and Local Traffic.

### ROCCO'S ROAMING MANAGEMENT SURVEY 2015



### ROCCO'S CUSTOMER SERVICE REPORT 2017 :



## We also have



## Contact Information

● [Contact@roam-smart.com](mailto:Contact@roam-smart.com)

● [www.roam-smart.com](http://www.roam-smart.com)

● Madrid - Tunis